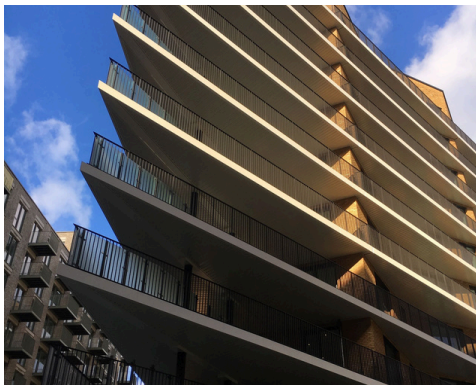
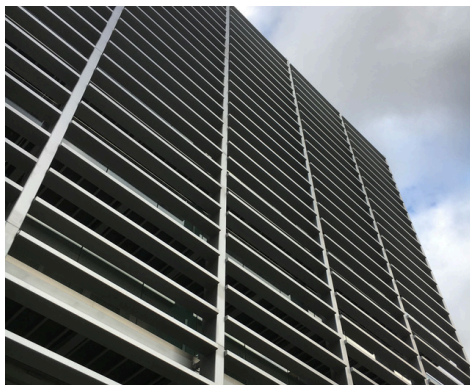


Mercier Court

Between North Woolwich Road and Thames Street, London



Project Case Study

The Challenge

This contract provided a very great handling challenge due to the sheer size. As well as the requirement for an upmost precision checking in and out procedure. The balcony sets were all different and sometimes only by a few millimetres. This meant the matching sections had to be packaged, stored and loaded in sets to ensure smooth and efficient installation. Once in the 'hands of the crane' we could not afford for it not to be the right set.

The Solution

The size and processing requirements came well within Bradleys capabilities, and by devoting a project manager to the contract, we were able to load the balconies in their correct sets ready for crane installation.

The Detail

Mercier Court (previously Anchor Building) was built on the former site of Minoco Wharf. The Royal Wharf development is a mere 3 minute walk from the Pontoon Dock DLR and just down the road from London City Airport.

Project Data

Location:	Between North Woolwich Road and Thames Street, London
Sector:	Mixed
Completion:	2018
Items Coated:	168 Balconies, associated support beams, deck frames, angles, 5 large square balconies, 6 slim balconies, 9 large corner triangular balconies
Substrate:	Mild Steel
System:	Powder Coating
Durability:	20+ Years External
Finish:	RAL 8080 Matt



© Bradleys (Stowmarket) Ltd 2025