

## Project Case Study

### The Challenge

To provide a superior finish to a seafront iconic landmark building which not only meets the high aesthetic demands, but also ensures the longevity and durability from all the elements associated with a building less than one hundred metres from the sea. On a coastline with temperatures ranging from below freezing and up to late 20s and with over one hundred days of sunshine per year, the challenge was to supply a finish that could endure these weather conditions, as well as the added corrosive salt spray from the sea. With several hundred metres of balustrade on this new 15 storey apartment building the finish had to be very protective, very consistent and support a 15-year warranty.

### The Solution

Bradleys rose to the challenge and used their renown QUALIZINC Arc Metal Spray system for the mild steel balustrades followed by a carefully selected high grade architectural polyester powder. Using our highly skilled workforce and as well as our in-house quality control and undertaking independent inspections, the work was measured and inspected constantly throughout the process. This included many square metres of aluminium where we used a marine grade duplex system again followed by the high-grade architectural topcoat.

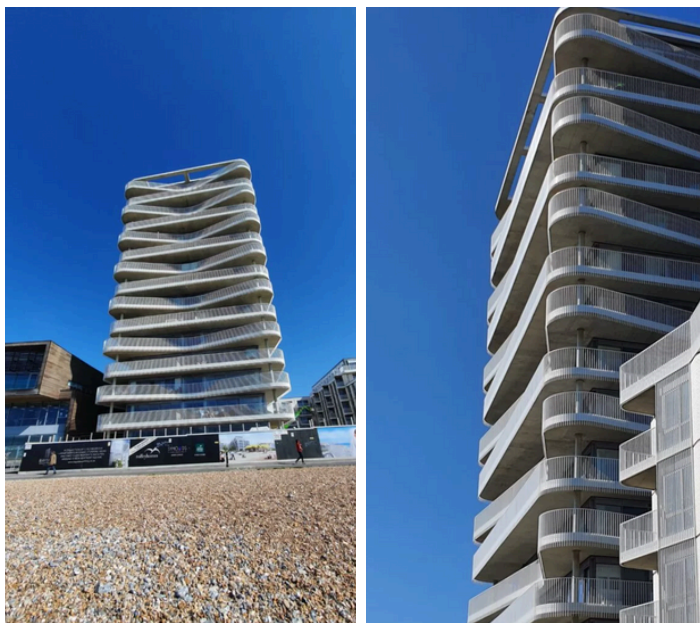
### Testimonial

*"To design a prestigious landmarked building which sits 'on the beach' in Worthing gave us multiple challenges. For the coating on the architectural metalwork package, we are very thankful that we used Bradleys who worked closely with us and the metal fabricator. We are extremely happy with the end result that Bradleys have provided, combining a robust finish on the metalwork balustrade package, which will perform well in the aggressive environment but has pleasing aesthetics to contribute to the overall unique design."*

Ben Cheal, Roffey Homes

## Project Data

|                      |  |
|----------------------|--|
| <b>Location:</b>     | Bayside Vista Apartments,<br>Worthing, West Sussex |
| <b>Sector:</b>       | Hotel & Leisure                                    |
| <b>Completion:</b>   | 2020   |
| <b>Items Coated:</b> | Mild steel balustrades,<br>Aluminium Fascia        |
| <b>Substrate:</b>    | Mild Steel, Aluminium                              |
| <b>System:</b>       | <u>Powder Coating</u>                              |
| <b>Durability:</b>   | 15+ Years External                                 |
| <b>Finish:</b>       | RAL 9016 Matt                                      |



© Bradleys (Stowmarket) Ltd 2024