



Project Case Study

The Challenge

To provide a strong coating to protect the balustrades in their waterside location and, at the same time, ensuring the finish is attractive for the residents to handle, without unsightly runs or weld-lift.

The Solution

Hot zinc spray plus powder coat was the perfect solution. The pure zinc coating provided a strong barrier to protect the steelwork against corrosion and ensured a very aesthetically pleasing finish that is a pleasure to handle, avoiding unsightly raising of the welds or runs. Bradleys hot zinc sprayed the balustrading, which gave it a strong anti-corrosion barrier and avoided weld lifts and sharps/spikes; then powder coated the balustrading in RAL 9007 Grey Aluminium which complimented the brickwork.

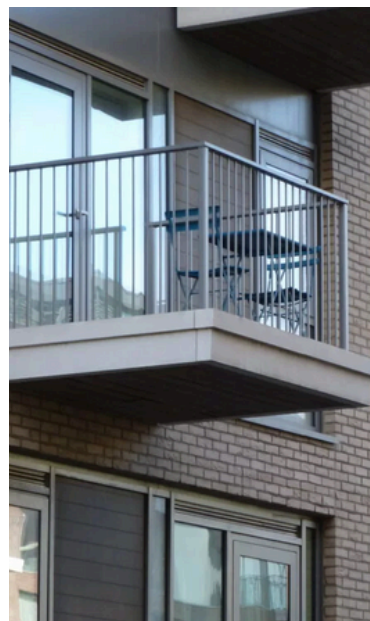
The Detail

Chelsea Creek is primarily a residential and mixed-use development located alongside Imperial Wharf station and Chelsea Harbour. This attractive waterside living development has a distinct European feel and offers a refreshing environment for the residents. The residents benefit from their own private balconies overlooking the water or the attractively landscaped pathways and gardens. It was critical that the balustrading had excellent anti-corrosive properties, especially around the waterside area, as well as being aesthetically pleasing.

Project Data

Location:	Fulham, London SW6
Sector:	Residential
Completion:	2016
Items Coated:	balcony bases, balcony balustrades, terrace railings, juliets
Substrate:	Mild Steel
System:	<u>Powder Coating</u>
Durability:	20+ Years External
Finish:	RAL 9007 Matt

RAL 9007



© Bradleys (Stowmarket) Ltd 2024